



 **PEINEMANN**
EQUIPMENT

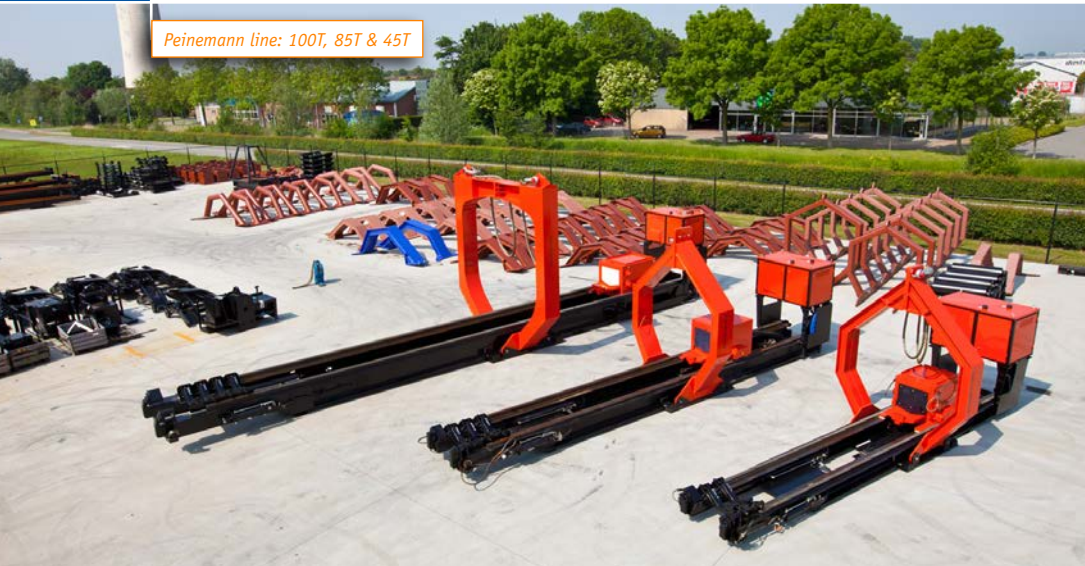
BUILT FOR THE TOUGHEST JOBS

AERIAL BUNDLE EXTRACTOR

[PEINEMANNEQUIPMENT.COM](https://www.peinemannequipment.com)

The Aerial Bundle Extractor

Since the development of the first so called, "bundle pullers" in the late 60's, this successful product has gone through some major changes. Where the first bundle pullers were huge, air driven and slow machines, the new design is all self contained, easy to operate and slim, making it possible to pull nearly any bundle with minimal effort. Peinemann has been active in bundle pulling since the early 70's. Being a large contractor in this field, helped us discover what was really necessary to build the best bundle puller for the job. The secret is to listen and look at the people in the field who use the machines every day and design a machine especially for them.



Peinemann line: 100T, 85T & 45T



Bundlelifter



Three meter diameter tube sheet (10 feet)



100T bundle puller with 100T winch capacity



NEW 25T extractor with 30T combi lifter

As the world changes around us, so does the size and weight of the bundles. We are noticing that the new plants often have larger and heavier bundles than we ever expected years ago. Being active as a leader in the world wide market of bundle pullers keeps us informed about the new developments and helps us to change our designs according to the latest technological possibilities.

The Aerial bundle extractor is a self contained unit, which is easily lifted in position by a crane. The machine has its own air cooled diesel engine, which drives the hydraulic system and is operated via remote control.

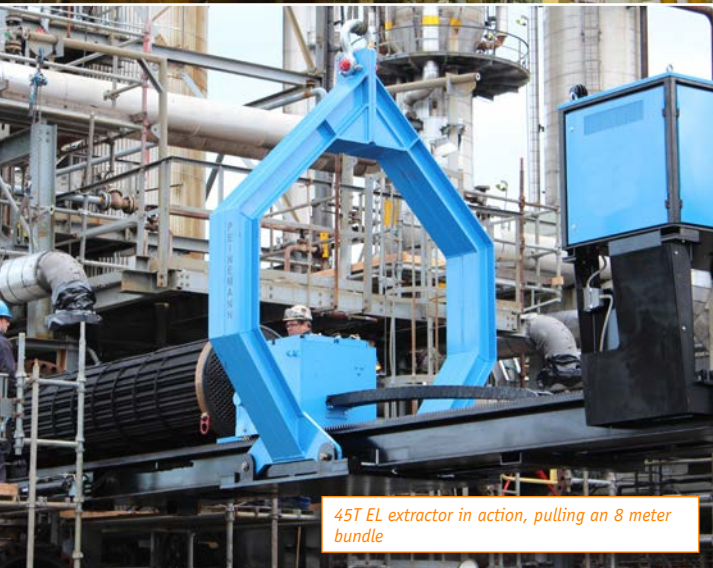
Depending on the weight, length and diameter of the bundle, we can offer you a custom made extractor ranging from 25T up to 125T capacity (until we are asked to go larger).

The extractor is clamped to the exchanger by means of 2 hydraulic clamps at the front of the machine. Two steel slings are secured around the shell to make sure the extractor is

25T extractor in action



45T bundle puller with 2 meter rear extension (6.5 feet). Pulling 10 meter bundle (33 feet)



45T EL extractor in action, pulling an 8 meter bundle



60T bundle puller with 10 meter bundle (33 feet) and 2,75 meter diameter lifting frame (9 feet)

absolutely fixed to the shell before we start to pull it out. With a very powerful hydraulic pull car, ranging from 30T up to 100T pulling force, we can easily pull the exchanger out of the shell without putting any stress on the foundation. The pull car is equipped with a vertical lifting pull hook system which can hydraulically raise and lower to make sure the bundle is always in line with the shell while pulling. This feature offers huge benefits for the operators of the crane as it brings the communication with the bundle puller operator down to a minimum.

Once the bundle is pulled out, the operator balances the extractor by moving the lifting frame forward with his remote control. When the extractor is in balance, the slings at the front will become slack and the operator can now safely disconnect the extractor from the shell and lower the extractor to the ground.

Once on the ground, the balance frame can be moved backwards and the bundle moved forwards so the bundle can be lifted out without dismantling the extractor.

Optional wireless remote control



Standard remote control with cable



Features

1. Front butt plates
2. Engine compartment with air cooled diesel engine and hydraulic pump/valves
3. Hydraulic pull car with 2 hydraulic motors and 4 gearwheels
4. Vertical lifting "pull hook" covered with heavy duty plastic
5. Pulling anchors for initial break of the bundle with slings
6. 2 Front clamps
7. Balance cylinder connected to lifting frame to balance the extractor
8. Main frame
9. Sling cylinders to attach the extractor to the shell flange
10. V-blocks to support the bundle
11. Lifting frame
12. Balance plate with attachments for lifting frame



A

Extractor in empty balanced position



B

Connect slings to shell flange and clamps behind shell flange



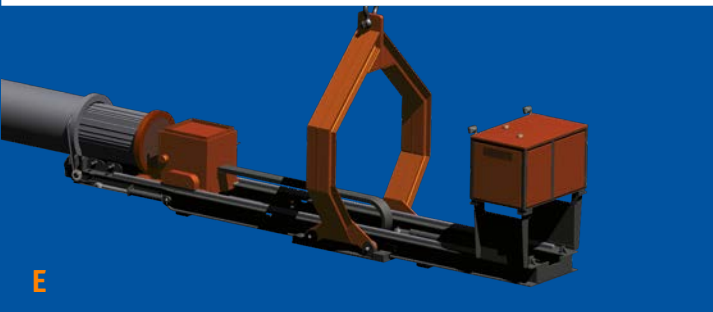
C

Connect pulling slings of the pull car to tube sheet



D

Initial break of bundle



E

Disconnect pulling slings and move pull hook behind tube sheet



F

Use V-block to support bundle



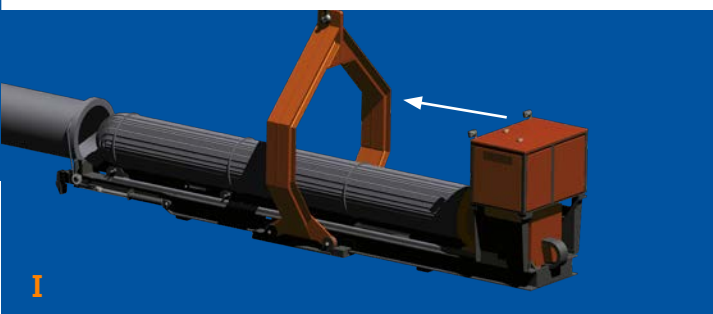
G

Pull out bundle completely



H

Disconnect clamps



I

Move lifting frame forwards with balance cylinder



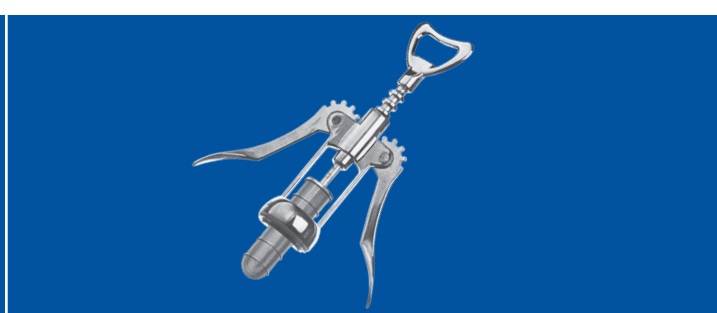
J

When slings are loose, disconnect and remove extractor



K

Position extractor on the ground and move lifting frame backwards to remove bundle



Simple, like opening a bottle!

Quick bundle extraction and insertion

Most bundles can be removed quickly and easily with our extractors. Of course, they can be put back in the shell, using the same machine.



Peinemann offers a wide range of bundle extractors

1. **25T 6100x1600E** Our smallest extractor, capable of handling bundles up to 7 meter length, 1.6 meter diameter* and bundle weight capacity of 25T. This is an extractor which is perfectly suitable for the confined areas thanks to its dimensions and its low own weight of approx 5T.
2. **45T 7000x2000EL(S)** One of our most popular extractors. It can handle bundles up to 8 meter in length and 2 meter diameter*. As a larger extractor can also handle the smaller bundles it gives you added flexibility. A powerful winch with dual hydraulic motors will generate a continuous pulling force of 60T. Thanks to the dual motor set up the system works at a max of 190 Bar. This contributes to a much longer life of the extractor. This model is also available with the 2 meter rear extension to pull bundles up to 10 meter.
3. **45T 8000x2000EL(S)** Same capacities and suitable for bundles up to 9 meter in length. This model is also available with the 2 meter rear extension to pull bundles up to 11 meter.
4. **60T 9000x2000ES** One of our most versatile extractors thanks to the front and rear extensions. This model allows you to pull even



longer bundles. This rear extension will also allow you to enter much deeper into (super) structures.

5. **85T 9000x2000ES** Similar versatility as our other ES models but with a higher capacity winch (80T pulling force). This model is also available with a 2 meter rear extension to pull bundles up to 12 meter.
6. **100T/125T plus models** As plants become larger, the exchangers grow with them. We have made custom exchangers of 100T plus models to accommodate specific projects. The standard extractor has

a capacity of 125T and up to 10 meter bundle length. With 2 meter rear extension the capacity is reduced to 100T. The standard lifting frame is 3.5 meter.

*Different sizes of lifting frames are available with all extractors.

Hydraulic Tube Bundle Extractor

Technical specifications

EXTRACTOR MODEL	Max. bundle length for extractor without extensions, mm	Length of the extractor without extensions, mm	Max. bundle length for extractor with front and rear extension, if applicable, mm	Length of the extractor with both front and rear extensions attached, if applicable, mm	Max. bundle diameter with standard lifting frame	Other size lifting frames which are available	Operational weight, kg (approx.)	Max. pulling force of winch, ton
25T 6100x1600E	6100	7100	7100	8100	1600	2000	5000	30
25T 7100x1600	7100	8100	7100	8100	1600	2000	5500	30
45T 7000x2000EL(S)	7000	8000	10000	11000	2000	2500 / 3000	8500	60
45T 8000x2000EL(S)	8000	9000	11000	12000	2000	2500 / 3000	8900	60
60T 9000x2000ES	9000	10000	12000	13000	2000	2750 / 3000	11500	60
60T 10000x2000ES	10000	11000	13000	14000	2000	2750 / 3000	12500	60
85T 9000x2000ES	9000	10500	12000	13500	2000	2750 / 3000	14500	80
85T 10000x2000ES	10000	11500	13000	14500	2000	2750 / 3000	14500	80
100T/125T 10000x3500S	10000	11500	12000	13500	3500	2000 / 3000	23000	100

Peinemann Equipment

See also
www.peinemannequipment.com

Peinemann Equipment B.V.
Mandenmakerstraat 190
3194 DA Hoogvliet
Phone: +31(0)10 - 295 50 00
E-mail: equipment@peinemann.nl

Peinemann Equipment USA, Inc.
1300 S. Frazier Street
Ste 310
Conroe, Texas 77301
Phone: +1 713 444 3833
E-mail: sales.usa@peinemann.nl