



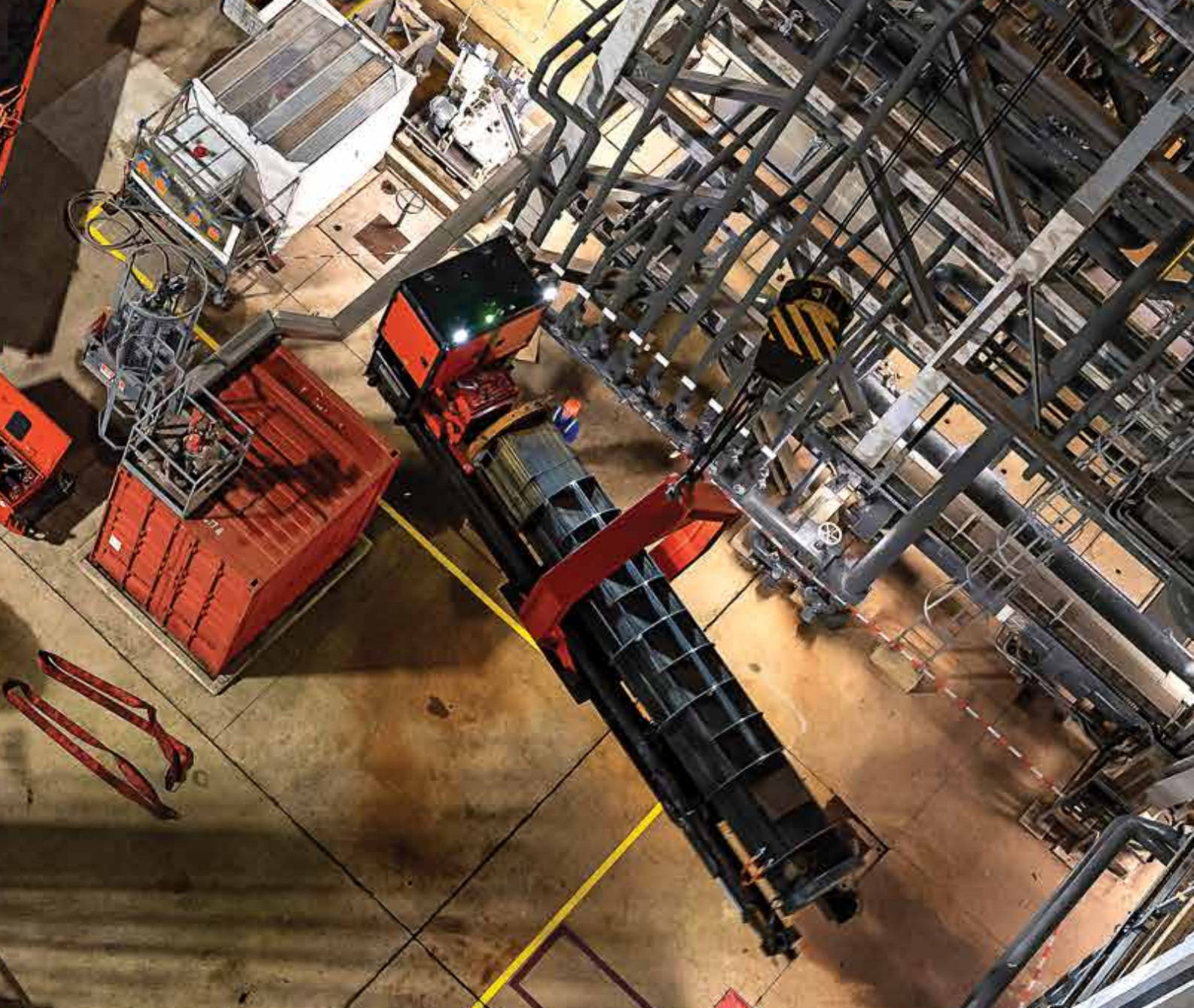
PRODUCT RANGE

 **PEINEMANN**
EQUIPMENT

BUILT FOR THE TOUGHEST JOBS



BUILT FOR THE TOUGHEST JOBS



PEINEMANN EQUIPMENT

As a leading provider in the industry, Peinemann Equipment takes pride in offering a comprehensive range of specialized equipment, built for the toughest jobs to maximize efficiency, enhance safety and tackle the distinct challenges of cleaning, extracting and lifting operations.

Our equipment is divided into three categories: cleaning, extracting and specials. The cleaning category includes high-pressure lance cleaners, as well as inside and outside bundle cleaners for wash bay cleaning. In the extracting category, we offer advanced aerial bundle extractors, lifters and combi lifters, as well as self-propelled extractors for seamless bundle handling. Our special category includes versatile multi lifters, designed to meet various industrial lifting needs.

Drawing on our extensive field experience, each product has been thoughtfully designed to surpass industry standards. We encourage you to explore the diverse solutions we offer and experience the unparalleled efficiency, safety and performance that have established Peinemann Equipment as a trusted partner in the industry—consistently prepared for the toughest jobs.

CLEANING

Our cleaning equipment is built to tackle tough dirt and contaminants found in bundles and pipes. With innovative designs and cutting-edge technology, our equipment provides unmatched versatility and safe cleaning.

- Extensive service and parts network
- Versatile design for various cleaning applications
- Powerful and durable equipment to tackle the toughest jobs



SINGLE LANCE FEEDER (1-XS)

The Peinemann Single Lance Feeder (1-XS) from the XS series stands as the lightest tube feeder in the Peinemann product range. Built with our most dependable components, the 1-XS weighs a mere 6.0 kg (13.2 lb) while maintaining superior strength. Its modular design enables tool-free parts replacement and easy maintenance, while the compact design accommodates operation in restricted and demanding spaces. Furthermore, the 1-XS can be seamlessly adapted for pipe cleaning operations, amplifying its versatility.



ORION INDEXER

The Peinemann Orion Indexer is a lightweight, easy-to-transport pneumatic indexing frame that enables operators to work from a safe distance using remote control. It is recommended to use the Orion Indexer with the 1-XS for handling hoses from 3/2 up to 6/4, and with the 1-XLTC for hoses ranging from 3/2 up to 8/4. Additionally, the Orion Indexer is available with a shotgun adapter for cleaning the tube sheet from a safe distance. The Orion Indexer is shown with an optional adapter for tube sheet mounting, featuring left/right clamps for added convenience.



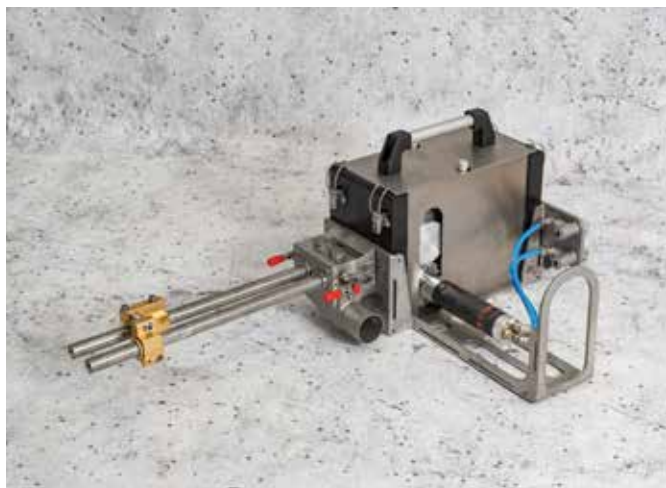
DOME CLEANER

The Peinemann Dome Cleaner is a specially designed pneumatic indexing frame that is lightweight, compact and features a tool-free special locking system for effortless setup on a tube sheet. It is recommended to use the Dome Cleaner with the 1-XLTC for handling hoses from 3/2 up to 8/4. Additionally, the Dome Cleaner is available with a dual-camera system, which includes a monitor attached to the remote control stand, enabling seamless operation from a safe distance.



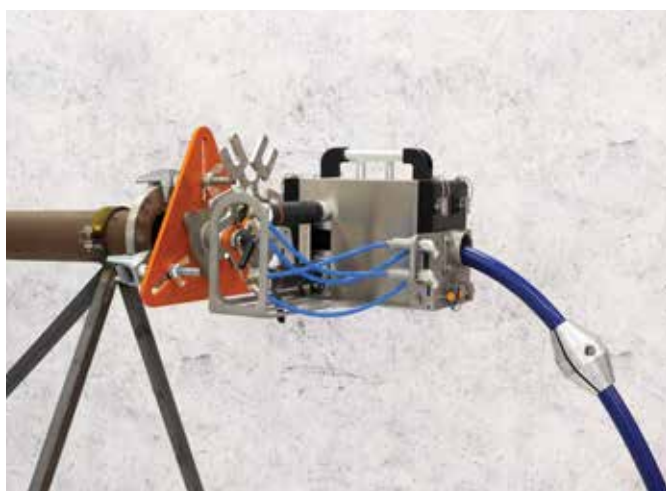
DUAL LANCE FEEDER (2-XLTC)

The Peinemann Dual Lance Feeder (2-XLTC) from the XLTC series is built for challenging tube cleaning operations. Equipped with an Atlas Copco motor, it delivers up to 50 kg (110 lb) of push/pull force, while the robust drive unit can handle the most demanding tasks. Its versatile design allows the 2-XLTC to accommodate a broad range of hose sizes, and the modular components enable quick cartridge replacement and easy maintenance. Furthermore, the 2-XLTC can be effortlessly converted into a single lance pipe feeder (X-XLTC).



SINGLE LANCE FEEDER (X-XLTC)

The Peinemann Single Lance Feeder (X-XLTC) from the XLTC series is a robust solution for challenging pipe cleaning operations. Powered by two Atlas Copco motors, it delivers up to 180 kg (397 lb) of push/pull force, while the durable drive unit can tackle the toughest tasks. Its versatile design allows the X-XLTC to work with a broad range of hose sizes, and the modular components enable swift cartridge replacement and easy maintenance. Furthermore, the X-XLTC can be effortlessly converted into a dual Lance tube feeder (2-XLTC) for added versatility.



TRIPLE LANCE FEEDER (3-TLX)

The Peinemann Triple Lance Feeder (3-TLX) from the TLX series is the lightest, strongest and most versatile tube feeder in the industry. Its innovative modular design is up to 30% lighter and more robust than its predecessors, thanks to an ultra-light carbon fiber drive unit. The interchangeable gear drive system provides 25% additional speed and power control, delivering up to 130 kg of push/pull strength with a single motor. This makes the 3-TLX an all-in-one powerhouse. Designed with versatility in mind, the feeder can be easily configured to accommodate 2, 3, 4 or 5 flex lances, as well as being reconfigured for pipe cleaning jobs.



SINGLE LANCE FEEDER (1-TLX)

The Peinemann Single Lance Feeder (1-TLX) from the TLX series stands out as the lightest, strongest and most versatile pipe feeder in the industry. Its innovative modular design is up to 30% lighter and more robust than its predecessors, thanks to an ultra-light carbon fiber drive unit. The interchangeable gear drive system offers 25% additional speed and power control, delivering up to 200 kg of push/pull strength in slow gear mode, making the 1-TLX an all-in-one powerhouse. Designed with versatility in mind, the feeder can be easily configured into a 2,3,4 or 5 lance feeder.



FLEX FRAME 3.0

The Peinemann Flex Frame 3.0 stands out as the most efficient, versatile and easy-to-assemble indexing frame in the industry. Its innovative design and durable components enable precise motorized indexing. The modular features make it highly compatible with a wide range of Peinemann cleaning equipment, such as TLX and XLTC feeders. The Flex Frame 3.0 offers 10% additional range in all directions compared to previous models, and the feeder can be mounted to both sides of the up/down assembly, further expanding the operating range. The Flex Frame 3.0 comes standard with 4" rails but can also be easily adapted to work with 2.5" rails.



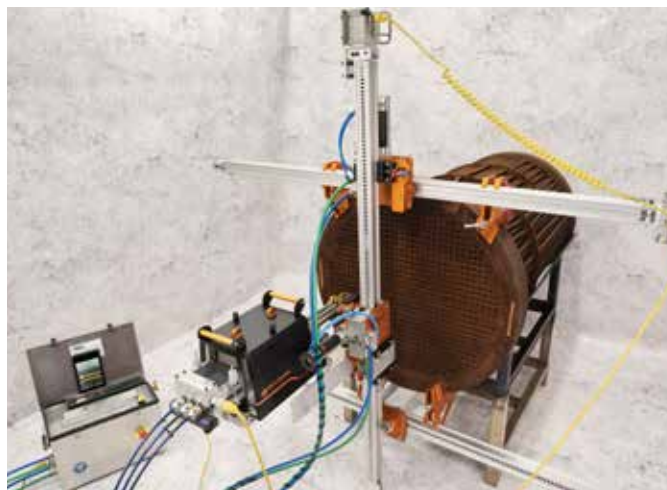
AUTO INDEXER

Introducing the highly innovative and groundbreaking Auto Indexing technology, a game-changer in the tube cleaning process. This state-of-the-art technology not only increases efficiency and operator safety but also ensures seamless compatibility with Peinemann Flex Frames for optimal performance. The Auto Indexer serves two essential functions: it accurately indexes the feeder on the Flex Frame and efficiently feeds the hose in and out of the tube. Powered by a battery, it provides the ultimate flexibility for use in any location, making it an indispensable addition to your tube cleaning operations.



FLEX FRAME 2.5"

The Peinemann Flex Frame with 2.5" rails is an indexing frame that boasts unparalleled efficiency, versatility and ease of assembly. Its innovative design and robust components enable precise motorized indexing. The modular nature of the Flex Frame ensures it is adaptable and suitable for a broad range of Peinemann cleaning equipment, including the TLX and XLTC. The feeder can be mounted on both sides of the up/down assembly, enhancing its operating range. Moreover, the lightweight components facilitate the manual transport and assembly of the entire frame.



TRIPLE LANCE FEEDER (3-TLE COMBI)

The Peinemann Triple Lance Feeder (3-TLE COMBI) from the TLE series is an incredibly versatile piece of tube cleaning equipment that can work with both flex and rigid lances. This feeder boasts two powerful motors that generate up to 250 kg (551 lb) push/pull force, ensuring highly efficient cleaning processes. The 3-TLE COMBI is ideal for use in various applications, including vertical setups, and its modular design enables quick assembly and easy maintenance.



QUINTUPLE LANCE FEEDER (5-TLE)

The Peinemann Quintuple Lance Feeder (5-TLE) from the TLE series is an incredibly effective and efficient piece of tube cleaning equipment, designed to handle the cleaning of bundles using up to five flex lances simultaneously. The 5-TLE can use five flex lances for cleaning larger diameter bundles, or three flex lances when cleaning smaller diameter bundles and fin fan coolers. Thanks to its compact design, the 5-TLE is the perfect equipment for cleaning fin fan coolers, as it can easily navigate tight spaces while providing optimal cleaning results.



INSIDE BUNDLE CLEANER (IBC-5)

The Peinemann Inside Bundle Cleaner (IBC-5) is a highly efficient rigid lance machine, designed to clean the dirtiest bundles during a turnaround and significantly increase operation efficiency in the wash bay. Its cabin is located on the top, providing operators with an optimal view of the tube sheet for maximum operating efficiency. The IBC-5 can clean five tubes simultaneously, with a maximum pressure of 1,400 bar (20,300 Psi), and it can be powered using a diesel or an electric power unit.



OUTSIDE BUNDLE CLEANER (OBC-C)

The Peinemann Outside Bundle Cleaner (OBC-C) is an efficient, reliable and safe bundle cleaner designed to handle even the dirtiest bundles in the wash bay. The cabin can tilt up to 10 degrees, providing improved visibility and protecting the operator from high water pressure and contamination. All functions are controlled from the cabin for increased efficiency and safety. The OBC-C is CE certified and assembled in the Netherlands. It can be powered using either a diesel or electric power unit.





EXTRACTING

With 40+ years of turnaround experience, we are a trusted supplier of cranes and specialized extraction equipment. Our expertise enables us to offer safe and efficient bundle extraction, lifting and transportation solutions.

- Designed with 40+ years of field experience
- Extensive expertise, service and training network
- Innovative and durable equipment for the toughest jobs



BUNDLE LIFTER (30 TONS)

The Peinemann Bundle Lifter 30 tons is the perfect lifter for wash bay operations during busy turnarounds. It can effortlessly lift bundles with a diameter of up to 1.8 meters and a maximum weight of 30 tons. The lifter can lift bundles from rollers, extractors and trailers without requiring additional accessories. This eliminates the need for heavy and dirty slings, improving operator ergonomics and safety while avoiding potential damage to the tubes. The lifter can be operated by a single operator using a remote control, providing maximum convenience and safety.



COMBI LIFTER (30, 53 & 70 TONS)

Peinemann's Combi Lifters are available in three different sizes with a capacity of 30, 53 and 70 tons, making them compatible with our standard 25, 45 and 60 tons Aerial Bundle Extractors (ABE). The Combi Lifters offer great versatility, functioning as part of the ABE (main lifting frame) and as a separate Bundle Lifter when disconnected from the ABE. The lifter can lift bundles from rollers, extractors and trailers without requiring additional accessories. This eliminates the need for heavy and dirty slings, improving operator ergonomics and safety while avoiding potential damage to the tubes.



AERIAL BUNDLE EXTRACTOR (15 - 125 TONS)

The Peinemann Aerial Bundle Extractors come in a range of capacities from 15 to 125 tons, ensuring there is a solution for every need. These extractors are designed to be highly reliable and durable, with a high-power winch that makes it easy to extract and insert the dirtiest bundles in the toughest conditions. Additionally, the Aerial Bundle Extractor can pull bundles at any height with crane support, adding to its versatility and ease of use. The design of the Aerial Bundle Extractor is based on years of experience in the field, ensuring optimal performance and safety.



TRUCK MOUNTED EXTRACTOR

The Peinemann Truck Mounted Extractor is a versatile piece of equipment designed for efficient and safe bundle extraction, insertion and transportation. Its hydraulic suspension ensures a smooth ride during transportation, and it is road legal for easy transport to and from job sites. The Truck Mounted Extractor can handle bundles up to 20 tons and can extract even the most resistant bundles with its powerful winch. With three heavy axles and four outriggers, the truck remains stable during operations, ensuring safe and efficient bundle extraction and insertion. In addition, it eliminates the need for a crane, reducing the risk of bundle damage and making it a cost-effective solution for busy turnarounds.



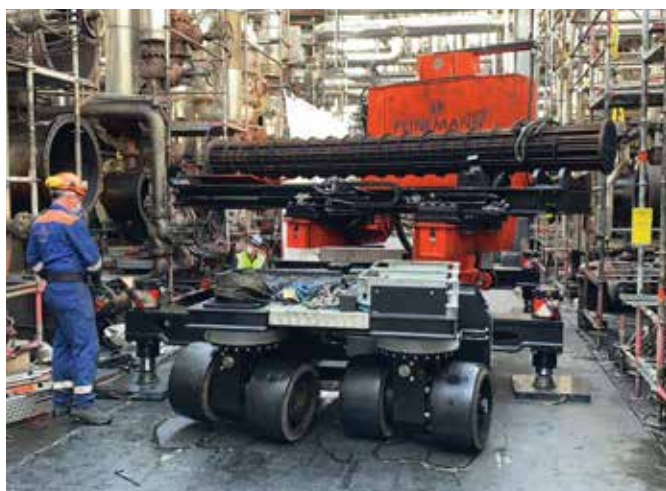
SELF-PROPELLED BUNDLE EXTRACTOR

The Peinemann Self-Propelled Bundle Extractor (SPBE) is a compact and versatile piece of equipment designed for efficient bundle extraction in hard-to-reach areas and under pipe racks. With a maximum bundle capacity of 25 tons, height capacity of 6 meters, and length capacity of 8 meters, the SPBE can handle a wide range of bundles during turnarounds. It is dual-steered for greater maneuverability and can be operated by a single operator. Additionally, it can be used to transport bundles to the cleaning bay, reducing the need for additional equipment and streamlining the turnaround process.



CRAWLER

The Peinemann Crawler is a highly maneuverable self-propelled extractor designed to extract bundles of up to 8 meters in length and with a maximum weight of 25 tons. The standard Crawler has a max. working height of 6 meters. Its unique 180-degree steering system enables it to drive sideways and turn in a very short radius, allowing it to easily access and extract bundles in the most challenging spots. Additionally, the Crawler eliminates the need for a crane during bundle extraction and insertion. For even tighter spaces, there is a Crawler Low Version which can operate at a max. working height of 4.0 meters.



FURNACE TUBE EXTRACTOR

The Peinemann Furnace Tube Extractor is a versatile, efficient and safe piece of equipment specifically designed for extracting and inserting furnace tubes. It's available in two versions, 12M and 21M, designed to handle furnace tubes up to 14.9 meters and 24.5 meters, respectively. The extractor consists of multiple pieces that can be configured to fit the specific job requirements, minimizing the need for scaffolding. Additionally, the extractor is remote-controlled, providing increased operator safety.



STRADDLE CARRIER

The Peinemann Straddle Carrier is a versatile and efficient solution designed to transport bundles on pallets to and from the wash bay in plants. Its linked four-wheel steering system allows for easy maneuverability, and its unique straddling design eliminates the need for cranes or forklifts, saving time and increasing efficiency during turnarounds. With a maximum bundle weight of 25 tons and bundle diameter of 1.8 meters, the Straddle Carrier is a reliable and cost-effective solution for transporting bundles in plants. Its transport height of 3.8 meters also adds to its versatility.





SPECIALS

Experience our innovative and durable equipment, designed for special lifting operations. With continuous development driven by client needs, we deliver advanced solutions that prioritize safety, efficiency and ease of use.

- Durable equipment for challenging jobs
- Continuous development for optimal solutions
- Enhanced safety through advanced innovations and standards



MULTILIFT 553

The Peinemann Multilift 553 is a highly adaptable and compact lifting solution for handling electric motors and other industrial components in hard-to-reach areas up to a height of 2.95 meters. With a maximum weight capacity of 500 kg and a lightweight design of only 150 kg, it is both powerful and maneuverable. It is operated with a straightforward yet durable hydraulic handpump. The Multilift 553 also comes equipped with additional accessories, including a slewing ring and crane hook, for added versatility and utility in various lifting applications.





Only drive in
lowest position

ALTRAD
BALANCE

PEINEMANN

Peinemann Equipment is a division of Peinemann, a leading global one-stop-shop provider of innovative and comprehensive solutions for a diverse range of industries, including ports, industry, logistics and construction. With over 69 years of experience, Peinemann has established a strong reputation as a trusted and reliable partner to businesses seeking to optimize their operations and achieve long-term success.

Peinemann offers a wide range of products and services, such as rental, sales and maintenance of equipment like cranes, forklifts, electric tractors, warehouse equipment, elevated work platforms, container handling equipment and bundle cleaning & extracting equipment. Additionally, Peinemann provides solutions including engineering, bundle extracting, industrial relocations, construction logistics and terminal maintenance. Through the commitment to excellence and continuous improvement, Peinemann is dedicated to meeting the evolving needs of its customers and delivering superior value.

4

MARKETS

- Ports
- Industry
- Logistics
- Construction

5

SOLUTIONS

- Engineering
- Bundle extracting
- Industrial relocations
- Construction logistics
- Terminal maintenance

7

TYPE OF MACHINES

- Cranes
- Forklifts
- Electric tractors
- Warehouse equipment
- Elevated work platforms
- Container handling equipment
- Bundle cleaning & extracting equipment



PORTS



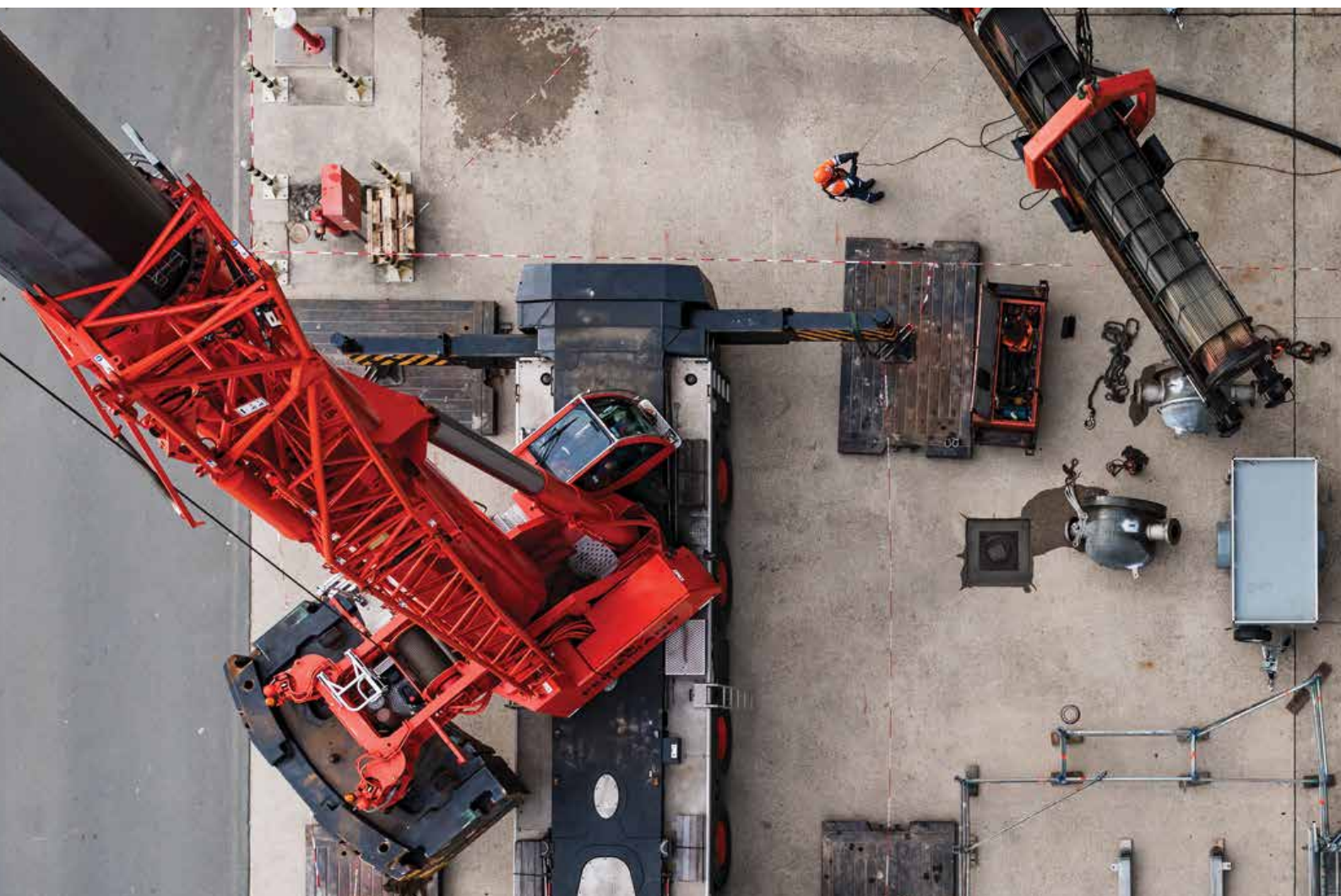
INDUSTRY



LOGISTICS



CONSTRUCTION









POSTAL ADDRESS NL

Mailbox 189
3190 AD
Hoogvliet, Rotterdam
The Netherlands

+31 (0)10 - 295 5000
equipment@peinemann.nl

POSTAL ADDRESS USA

1300 S. Frazier Street
Ste 310
Conroe, Texas 77301
United States

+1 281 288 7979
sales.usa@peinemann.nl

